

LZR[®] - i110 LZR[®] - i100

LASER SAFETY SENSORS FOR AUTOMATIC GATES

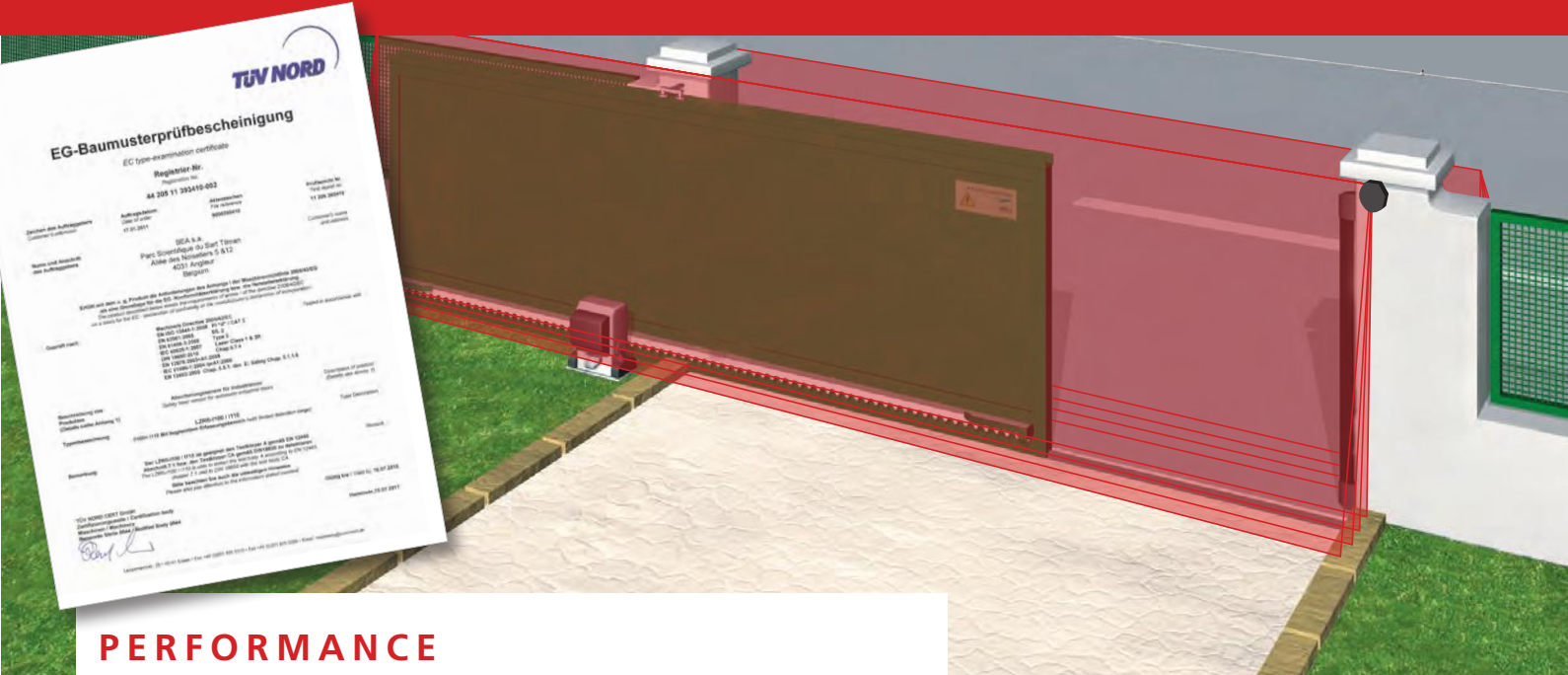


THE PREMIUM SAFETY **SOLUTION E**: EN12453*



CAME

The LZR[®] safety sensors are certified to meet **solution E: EN12453*** and work according to the principle of time of flight. This high precision technology ensures optimal safety. A dynamic orientation of the LASER beams on 4 planes offers more safety around the gate threshold and its proximity.



PERFORMANCE

- Easy installation and ideal for a retrofit.
- Maximum detection range : up to 10 x 10m.
- Detection of small objects.
- High level of safety with a complete three-dimensional detection in front of the gate.
- Variable depth of plane (up to max 1m.) according to the installation height.
- Certified CAT.2 according to EN 954-1, PL "c" according to EN ISO 13849-1 and Type E according to EN 12453.
- 2 Year Warranty

**Free Setup
Remote**
with every 2 LZR
sensors purchased.
NORMAL PRICE £10 net

***SUBJECT TO A CORRECT RISK ASSESSMENT AND INSTALLATION**

LZR[®] - i110

£525.00 each (Net + VAT)

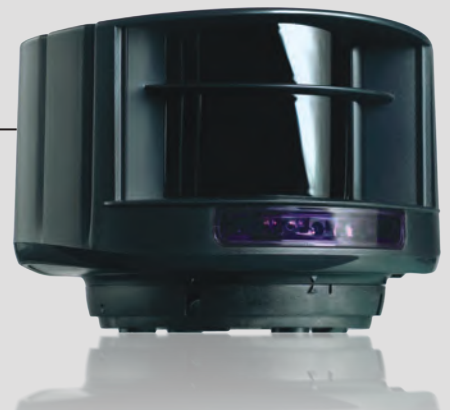


**MAXIMUM DETECTION
RANGE 5M X 5M**

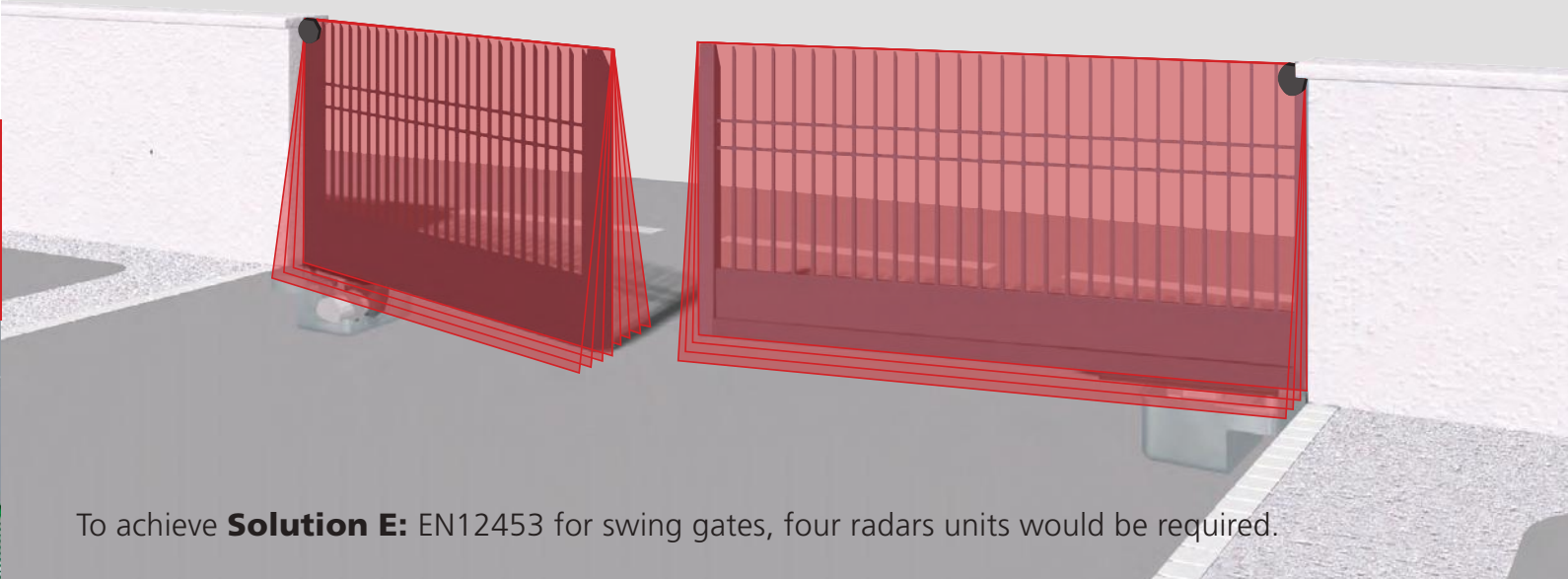
Save **£100** when
buying 2 LZR i110's

**2 YEAR
WARRANTY**

£950.00 (Net + VAT)



To order please call: Nottingham: 0115 921 0430 or Manchester: 0161 406 9800



To achieve **Solution E**: EN12453 for swing gates, four radars units would be required.

TECHNICAL FEATURES

Type	LZR -i110	LZR -i100
Technology	LASER scanner, time-of-flight measurement	LASER scanner, time-of-flight measurement
Detection mode	Presence (EN 12453 Type E)	Presence (EN 12453 Type E)
Max. detection range	5 m x 5 m	10 m x 10 m
Remission factor	> 2 %	> 2 %
Emission characteristics	IR LASER Red visible LASER	IR LASER Red visible LASER
	Wavelength 905 nm; max. output pulse power 75 W; Class 1 Wavelength 650 nm; max. output CW power 3 mW; Class 3R	Wavelength 905 nm; max. output pulse power 75 W; Class 1 Wavelength 650 nm; max. output CW power 3 mW; Class 3R
Supply voltage	10-35V DC @ sensor terminal	10-35V DC @ sensor terminal
Power consumption	< 5 W	< 5 W
Response time	Typ. 20 ms; max. 80 ms	Typ. 20 ms; max. 80 ms
Output	2 electronic relays (galvanic isolation - polarity free)	2 electronic relays (galvanic isolation - polarity free)
Max. switching voltage	35V DC / 24V AC	35V DC / 24V AC
Max. switching current	80 mA (resistive)	80 mA (resistive)
LED-signals	1 blue LED: power-on status 1 orange LED: error status 2 bi-coloured LEDs: detection/output status	1 blue LED: power-on status 1 orange LED: error status 2 bi-coloured LEDs: detection/output status
Dimensions	125 mm (L) x 93 mm (D) x 70 mm (H) (mounting bracket + 14 mm)	125 mm (L) x 93 mm (D) x 70 mm (H) (mounting bracket + 14 mm)
Material	PC/ASA	PC/ASA
Colour	Black	Black
Rotation angles on bracket	5° to +5° (lockable)	5° to +5° (lockable)
Tilt angles on bracket	-3° to +3°	-3° to +3°
Protection degree	IP65	IP65
Temperature range	-30 °C to +60 °C if powered	-30 °C to +60 °C if powered
Humidity	0-95 % non-condensing	0-95 % non-condensing
Vibrations	< 2 G	< 2 G
Size of target	< 300 mm x 200 mm x 700 mm @ 7 m (EN 12445 testbody A)	< 300 mm x 200 mm x 700 mm @ 7 m (EN 12445 testbody A)
Norm conformity	2006/95/EC: Low Voltage Directive; 1999/5/EC: R&TTE; 2004/108/EEC: EMC; 2006/42/EC: Machinery Directive; 2002/95/EC: RoHS; EN 60825-1 Class 1+3R; EN 60950-1; EN 60529 IP65; EN ISO 13849-1 Performance Level „c “; EN 12445; EN 12453 Typ E; EN 954-1 CAT.2	2006/95/EC: Low Voltage Directive; 1999/5/EC: R&TTE; 2004/108/EEC: EMC; 2006/42/EC: Machinery Directive; 2002/95/EC: RoHS; EN 60825-1 Class 1+3R; EN 60950-1; EN 60529 IP65; EN ISO 13849-1 Performance Level „c “; EN 12445; EN 12453 Typ E; EN 954-1 CAT.2

LZR[®] - i100

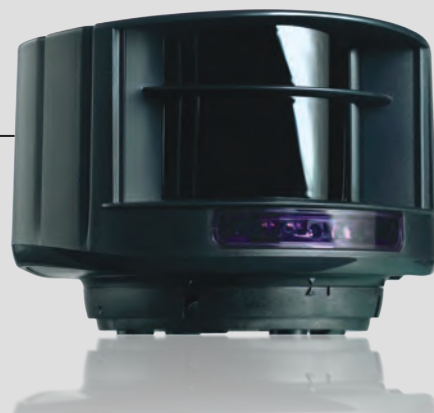
£650.00 each (Net + VAT)

**MAXIMUM DETECTION
RANGE 10M X 10M**

Save **£100** when
buying 2 LZR i100's

**2 YEAR
WARRANTY**

£1,200.00 (Net + VAT)



To order please call: Nottingham: 0115 921 0430 or Manchester: 0161 406 9800



*All orders arrive next working day if order is placed before 1pm Mon - Fri. Subject to normal stock availability.

CAME
Nottingham
Unit 3
Orchard Park Ind. Est.
Town Street
Sandiacre
Nottingham
NG10 5BP

Tel: **0115 921 0430**
Fax: **0115 921 0431**

CAME
Manchester
Unit 14
Latham Close
Bredbury Park Ind. Est.
Bredbury
Stockport
SK6 2SD

Tel: **0161 406 9800**
Fax: **0161 406 4791**

www.came.co.uk